

**STRUCTURE AUDIT & FACTUAL EVALUATION**

**Vibration analysis**



**Preventive maintenance**

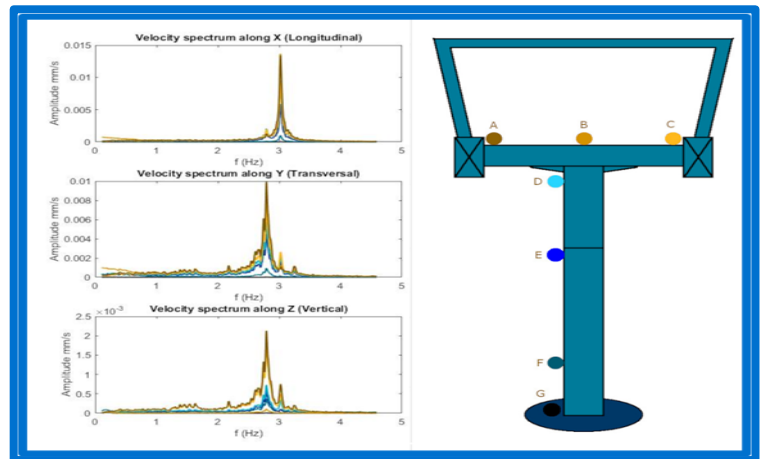


**Vulnerability assessment**



The SAFE expertise is an observational method of vibration analysis which makes it possible to understand the state of an installation in its entirety and especially in its technical reality of design, manufacture and operation. This global approach thus makes it possible to apply the practice of the "K.M.P" concept:

**Know – Master – Plan'**



**"The SARRASOLA company brings with this expertise a real scientific, innovative and above all recognized approach to our structures. A method therefore to be preferred, and which makes it possible to justify a lifespan much longer than that obtained with the traditional method"**

G rard Bracali, Director of Val d'Allos Loisirs D veloppement - President of the "Southern Alps" section within Domaines Skiabes de France



**Is recognised by \***



**\* Services techniques des remont es m caniques et des transports guid s**



74, Rue de la Gare - 73460 Gr sy sur Is re  
Tel: +33 (0) 4 79 37 94 16 - www.sarrasola.com



## SAFE expertise is a non-intrusive, particularly relevant approach to predictive maintenance.

Its application to infrastructures subjected to significant fatigue-generating stresses will make it possible:

- To know the real state,
- To control the risk associated with their aging,
- To plan heavy maintenance,
- To specify the ability to increase the performance of the installations.

**SAFE expertise allows operators to know the real state of the line structures of their ski lift fleet and thus to put in place investment plans adapted to their needs and the state of their existing fleet. Indeed, from the perfect knowledge of the state of the installations, stems the control of the maintenance expenses and the good planning of the investments..**

Pascal Boussillon, Managing director of Métabief

They use  **safe**  
expertise



74, Rue de la Gare - 73460 Grésy sur Isère  
Tel: +33 (0) 4 79 37 94 16 - [www.sarrasola.com](http://www.sarrasola.com)





**SARRASOLA – Entreprise du groupe VINCI ENERGIES**

Société par action simplifiée à associé unique au capital de 303 000 €

74, rue de la Gare –

73460 GRESY SUR ISERE

075 620 096 RCS Chambéry –

SIRET 075 620 096 00018 - NAF : 4222Z