

DIGITIZATION AND MODELING 3D at the heart of our expertise

Our equipment:



2 x LEICA Station C10

- Precision: 3 mm à 100 m
- Resolution Max : 1 pt / 2mm @ 100m
- Fast Acquisition
- Need: extremely precise numerical modeling of metal structures for structural calculations



1 x FARO Focus X130

- Precision: 1-2mm à 10m
- Resolution: 5 mm à 50 m
- Very fast Acquisition
- Need: scanning of a large area allowing centimeter measurements to be taken



1 TRIMBLE SX10

- Precision: 1-2mm à 100m
- Résolution: 6 mm à 50 m
- Range of 600m
- Need: Topographic scan or scan of difficult materials (stainless steel, plexiglass...)

Software:

Treatment

PLS CADD



Modeling



DIGITIZATION AND MODELING 3D at the heart of our expertise

Areas of expertise:



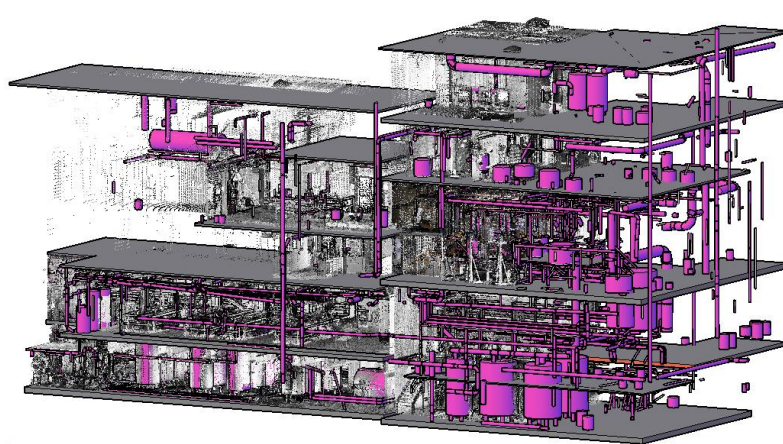
Energy



Construction



Ski lift



Industry

And many others...